

Maximum Efficiency, Minimum Duration

High-Volume Bulk Data Loaded in to Windchill

Background

A global corporate leader in the design and production of military equipment chose Legend for PDMLink to migrate 63,000 Pro/ENGINEER files from Metaphase in to Windchill.

The Challenge: Time-Sensitive Migration

Since company files would not be accessible during the migration process, migrating files from Metaphase in to Windchill quickly was crucial; Legend was given a maximum time frame of seven days to convert all files and metadata.

A representative group of 5,000 files were tested to determine project migration times. The initial test estimated that it would take approximately 17 days to migrate all of the files and metadata, which was over two times the maximum allowable time frame.

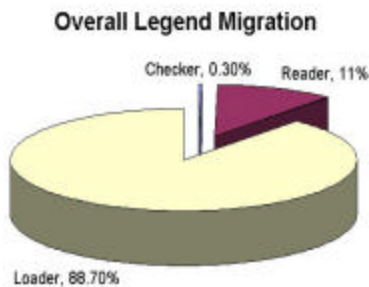
The Process

Legend's migration method involved three major procedures:

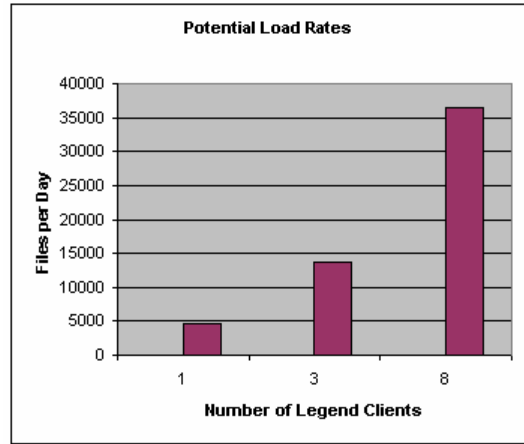
- Data Checking — Confirmed that files were readable and supported by Legend.
- Data Reading — Searched for attributes previously set in the mapping component; identified file relationships so that the structure could be re-created in Windchill.
- Data Loading — Loaded data in to Windchill PDMLink; established parent-child relationships between Windchill PDMLink objects.

The following chart explains the division of the overall migration time among the three processes.

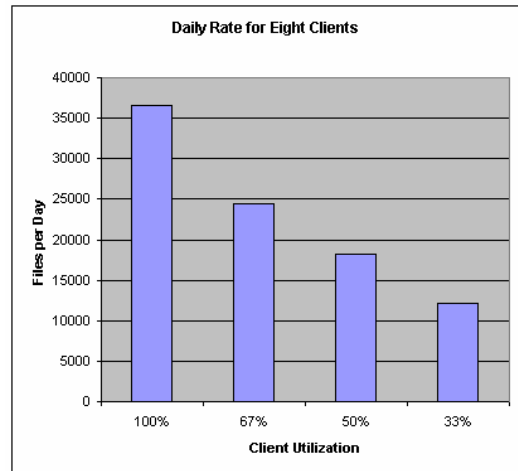
Utilizing Multiple Clients



Initial tests that estimated migration time to be 17 days were conducted using one Legend client. More tests determined that using multiple clients could reduce daily load rates by more than twice the original 17-day estimation. Daily load rates for running multiple clients were based upon eight clients each running a theoretical limit of 24 hours a day.



However, running multiple Legend clients 24 hours a day proved to be unrealistic due to sizes of the data sets and manpower issues. Through additional tests, it was determined that each of the eight clients could effectively migrate data running between 12 and 16 hours per day.



Local File Access

Original tests accessed files across a network from their original UNIX location via SAMBA. Several additional tests determined the overhead of remote file access. Copying files to a local drive reduced load time by 50 percent.

The Results

Legend for PDMLink successfully migrated 63,000 Pro/ENGINEER files in four days. Eight Legend clients ran for 12-16 hours per day during the four-day migration period. Using multiple Legend clients reduced the originally estimated time frame of 17 days by more than 75 percent.

Required Hardware Configuration

The following is a list of the minimum hardware configurations that are required to use Legend for PDMLink:

- Windows 2000 platform
- 1 GB RAM
- 2 GHz Processor
- Enough disk space to hold files locally

The following Server components used in this study were:

- Sun Ultra 4
- 4GB RAM
- 4 foreground method servers
- 1 background method servers

Legend Consultants: Expertise on Tap

Legend consultants have years of experience managing CAD data and maintain a reputation for unmatched product expertise. Legend consultants understand the value of your product data and strive to ensure that you are satisfied with Legend Services. Regardless of the complexity or scope of the project, Legend consultants aspire to achieve the following goals:

- Successfully migrate data while securing data integrity
- Complete job during the initial on-site visit
- Complete the project in a timely fashion
- Be personable and easy to work with

Legend Services: Realize the Potential of Your PDM

Reduce the hassles associated with the migration of CAD data and realize the full power of your product document management (PDM) with Legend for PDMLink.

Legend's flexibility handles even the most difficult data migrations. When data conversion poses a unique challenge, the Legend Services team will be there to help. Below are some of the services Legend consultants provide:

- Legend Configuration — Our product experts will help you configure Legend to load data in to your PDM system in special structures or formats.
- Legacy Access — If you have a legacy database or CAD system, Legend consultants can help you use Legend to migrate the data.
- Turnkey Bulk Loading — Our service team has successfully loaded thousands of CAD files at multiple locations across the country. An experienced Legend consultant can systematically migrate your CAD data in to Windchill.

About I³

Since 1984, Integrated Industrial Information, Inc. (I³) has developed solutions that maximize the tremendous potential of CAD information systems. We know that CAD data – the intelligence stored inside your engineering documents – is an incredibly valuable corporate asset. With products like Legend, we have helped organizations use PDM systems to create an enterprise-wide knowledge base that serves as an invaluable tool for making smarter business decisions. I³ allows companies to capitalize on their investment in systems and intellectual capital, harnessing their full potential.

*I³ and Legend are trademarks of
Integrated Industrial Information, Inc.
All other brand names, product names, or trademarks
belong to their respective holders.
Copyright © 2004
Integrated Industrial Information, Inc.
All rights reserved.*

