

Legend for PDMLink Data Flow

Legend securely transfers all your CAD data into PDMLink and notifies you of any duplicate or missing information.

CAD Data

1) Clean Product Data Set

Product Name: Pocket Knife
Source Folder: C:\Pocket_Knife

Assemblies:
pocket_knife.asm
scissors.asm

Parts:
blade.prt
nail_file.prt
spring.prt
base_scissor.prt
pivot_scissor.prt

Family Table:
Generic: pin.prt Instance: scissor_pin.prt

Drawings:
pocket_knife.drw

MS Office Document:
pocket_knife.doc

Designated Parameters:
Drawn_by: J. Smith
Material: Stainless Steel
Revision: A
View: Front
Weight: 8oz.

Summary Properties:
Author: J. Smith
Revision: A
Product: Pocket Knife

2) Incomplete Product Data Set

Product Name: Pocket Knife
Source Folder: C:\Pocket_Knife

Assemblies:
pocket_knife.asm
scissors.asm

Parts:
nail_file.prt
spring.prt
base_scissor.prt
pivot_scissor.prt

Family Table:
Generic: pin.prt Instance: scissor_pin.prt

Drawings:
pocket_knife.drw

blade.prt is missing!

3) Duplicate Objects within the Product Data Set and against PDMLink

Product Name: Pocket Knife
Source Folder: C:\Pocket_Knife

Assemblies:
pocket_knife.asm
scissors.asm

Parts:
blade.prt
old\blade.prt
nail_file.prt
spring.prt
base_scissor.prt
pivot_scissor.prt

Family Tables:
Generic: pin.prt Instance: scissor_pin.prt
Generic: pin_2.prt Instance: scissor_pin.prt

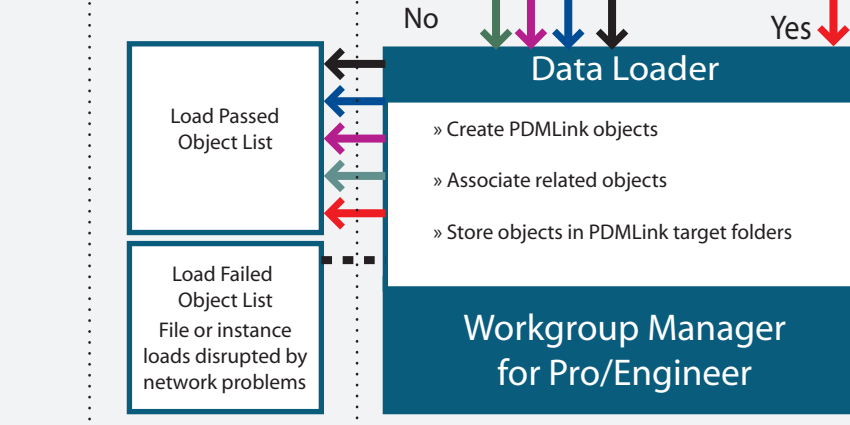
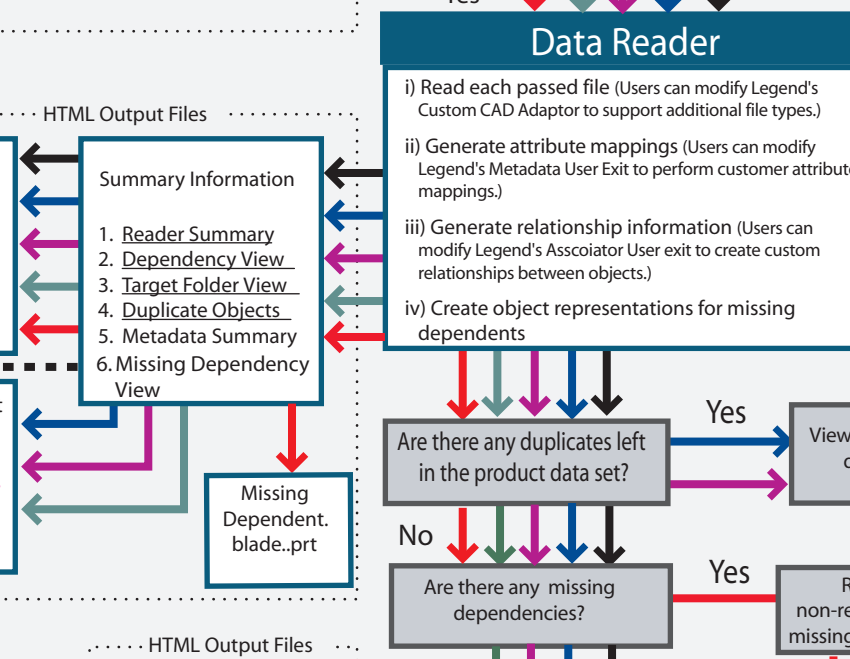
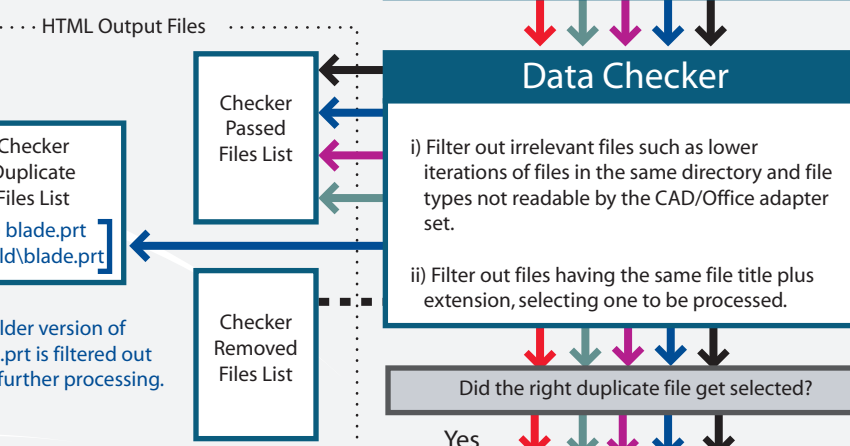
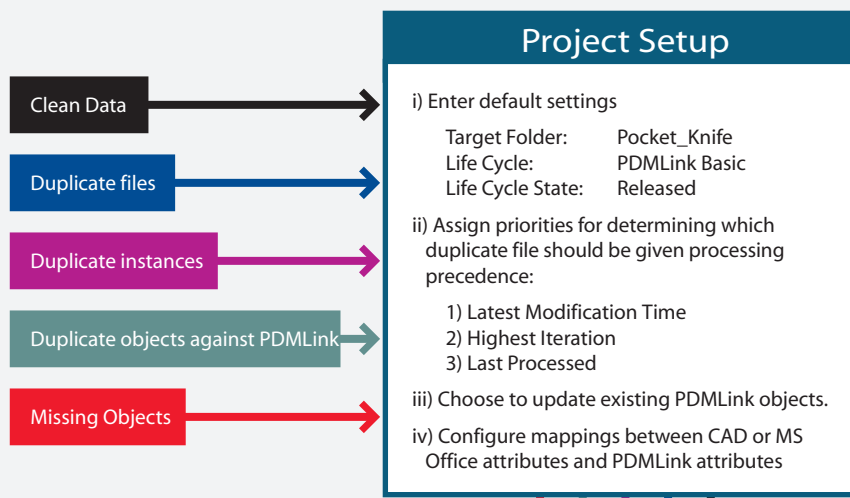
Drawings:
pocket_knife.drw

Objects already in PDMLink:
pocket_knife.drw

An older version of blade.prt exists in a sub-folder!

Two family tables have an instance of the same name!

An object to-be-loaded already exists in PDMLink!



PDMLink Data

